

EGFH (Green Fume Hood): CHEMICAL FILTRATION FUME HOOD

36" Countertop Depth

LENGTH:

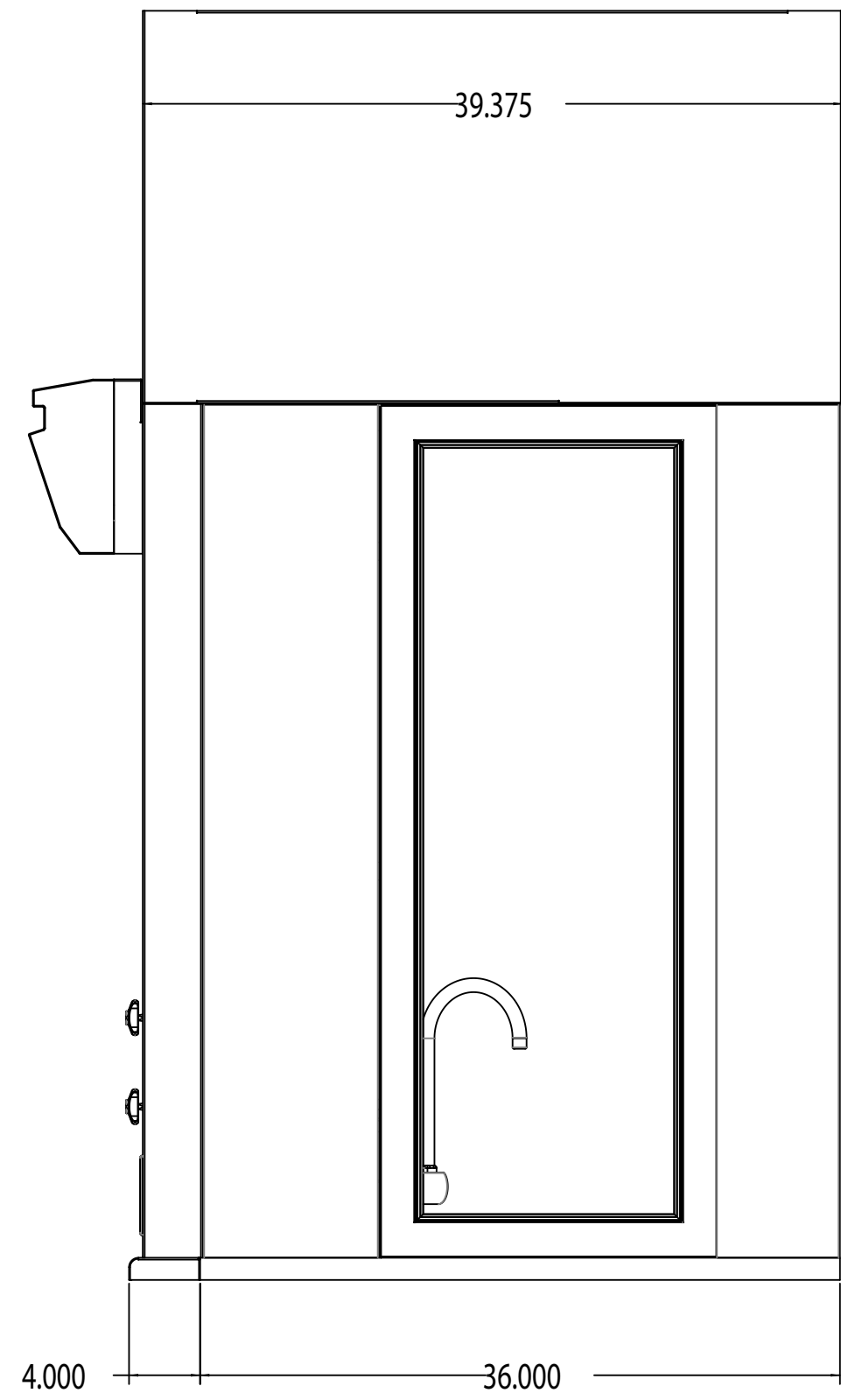
- 48" 60" 72" 96"

SIDE PANELS:

Glass	Left	Right
Polyresin	Left	Right
Powder Coated Steel	Left	Right

REAR PANEL:

- Glass
 Polyresin
 Powder Coated Steel
 Horizontal Glass Sliders

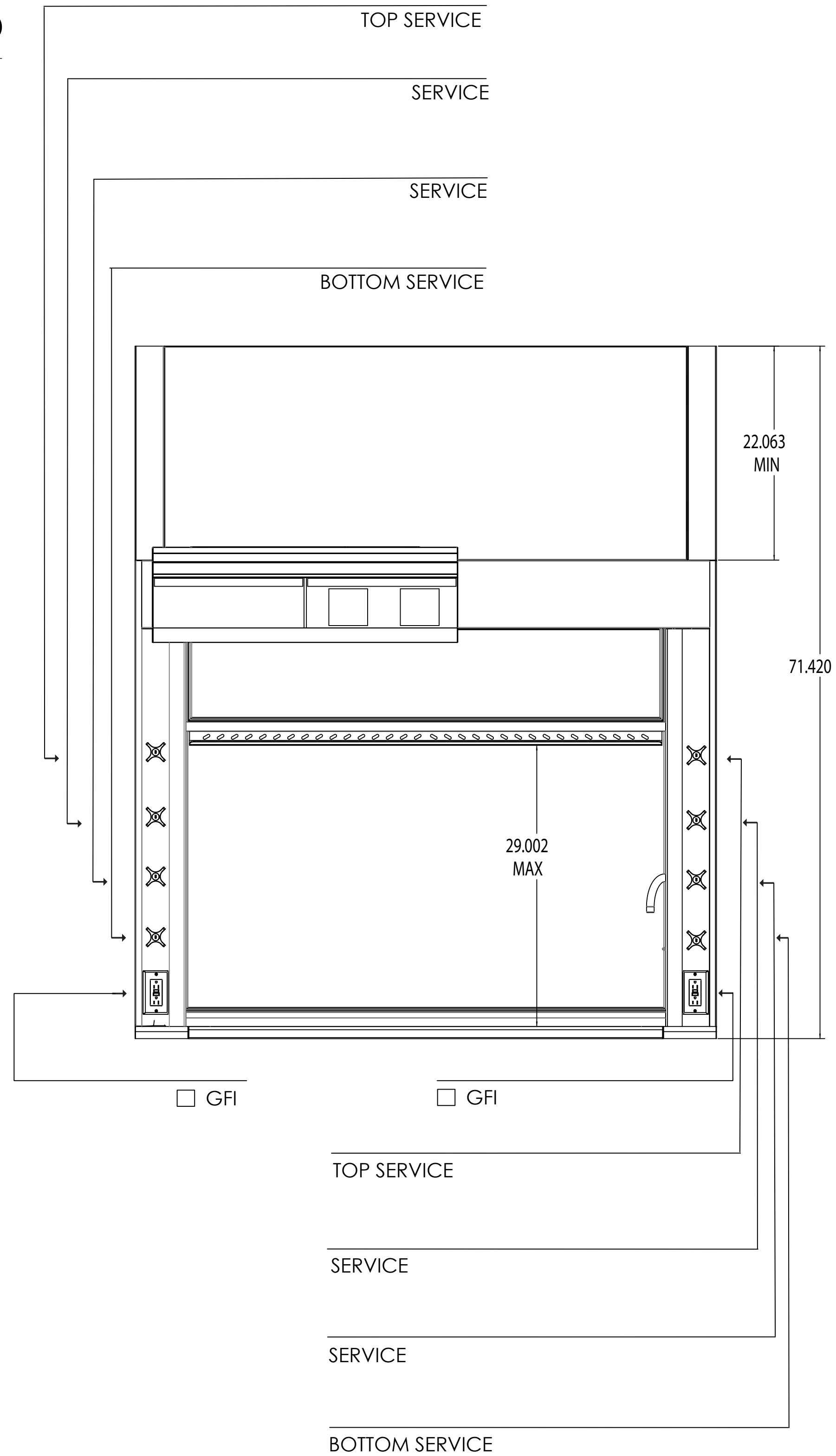


PRE-PIPING:

- Pre-Piping Up
 Pre-Piping Down

WORK SURFACE MATERIAL:

- Epoxy (standard)
 Type 304 Stainless Steel
 Type 316 Stainless Steel



EGFH

STANDARD FEATURES

- Sash Frames & Glass:
 - Painted Steel Frame w/ Laminated Safety Glass (standard)
- Airfoil:
 - Painted Steel (standard)
- Sash Type:
 - Vertical Single Sash (standard)
- Pre-Piping / Pre-Wiring:
 - All hoods are pre-wired & pre-piped unless other wise noted
- GFH Neutrodine® Technology controls with personalized RFID cards:
 - Three Distinct Levels of Access:
 - User, Administrator, & Maintenance
 - Electric RFID filter identification
 - Temperature detection and alert system

OPTIONAL ACCESSORIES

- Sash Frame & Glass (Lower Sash Only):
 - Stainless Steel Frame w/ Laminated Safety Glass
- Airfoil:
 - None
 - Type 304 Stainless Steel
 - Type 316 Stainless Steel
- Trough:
 - None
 - Painted Steel
 - Type 304 Stainless Steel
 - Type 316 Stainless Steel
- Ceiling Enclosure Custom Height (Minimum 22.063"):
- Other Height Required: _____
- Service Fixture Type:
 - None
 - Front Mount Ball Valve w/ lever handles (ADA)
 - Front Mount w/ four-arm handle

SPECIAL REQUIREMENTS: _____



AIR MASTER SYSTEMS CORP
 6480 Norton Center Dr
 Muskegon, MI 4944
 (231) 798-1111 Fax: (231) 798-4000