

# The Eliminator 700 Series

The Eliminator 700 Perchloric Acid Hood has the same aerodynamic design as the 100 series, with a 45-degree angle around the fascia and a flush-mount radiused airfoil across the bottom to minimize turbulence and provide increased performance.

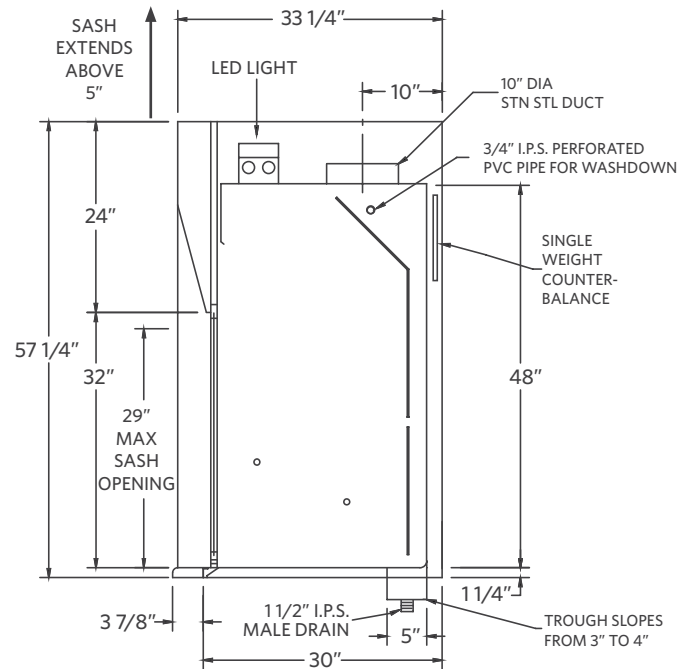
## ELIMINATOR 700 - PERCHLORIC ACID HOOD

### Perchloric Acid Hood - For Safe Handling of Perchloric Acid



**U.L. 1805  
Classified**

- Powder coat finish
- Full frame construction
- Shaft drive sash
- LED light with bulbs
- Flush-mount airfoil
- Full-length finger lift
- Louvered front for by-pass
- 316 stainless steel one-piece integral work surface and liner.
- Built-in trough
- Manual washdown
- Stainless steel sash
- Stainless steel airfoil



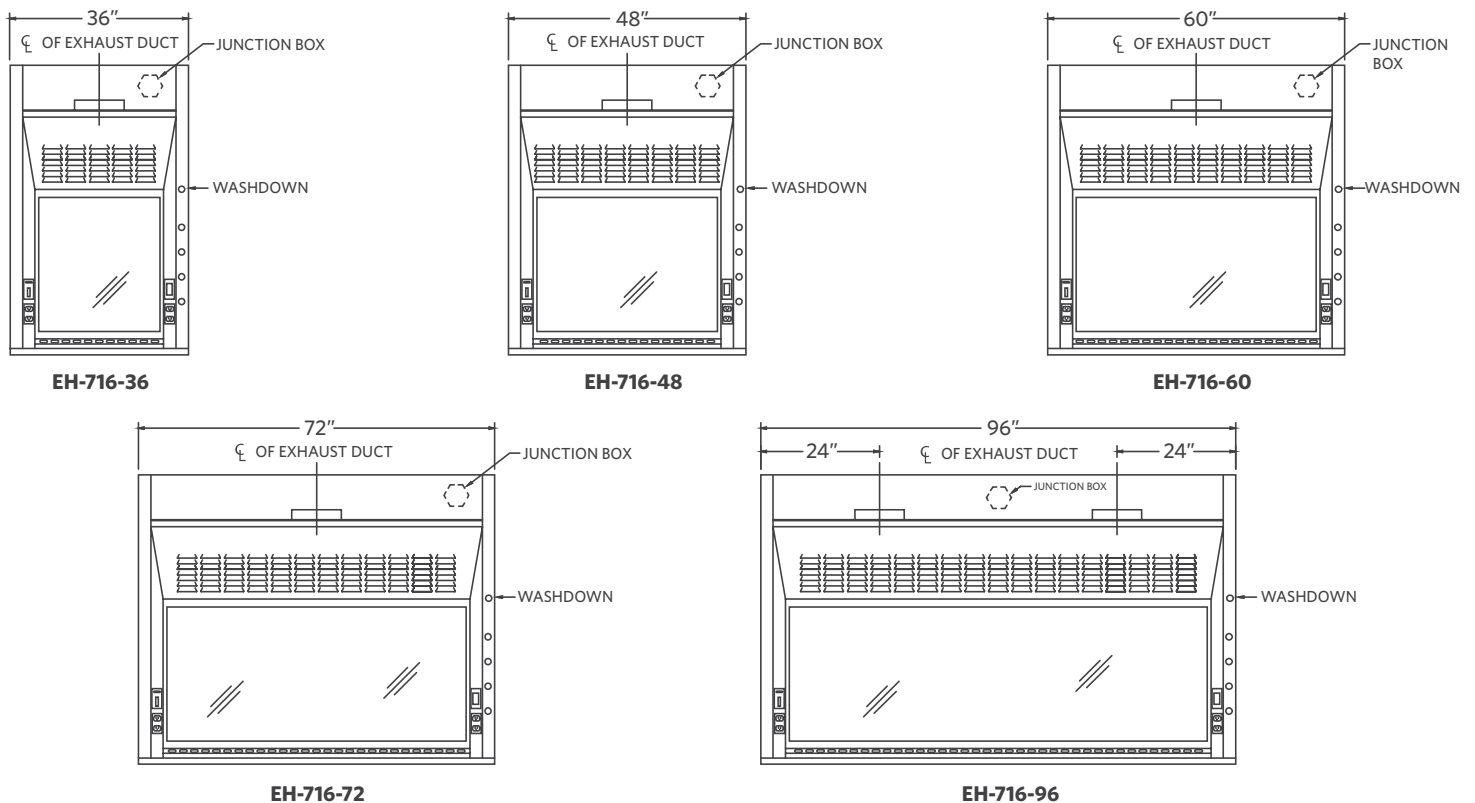
| Part Number | Superstructure |     |         | Integral Worktop |        |     | Hood Opening |     | CFM @ 29"* | CFM @ 18"* | SP  | Blower Model # | Shipping Weight |
|-------------|----------------|-----|---------|------------------|--------|-----|--------------|-----|------------|------------|-----|----------------|-----------------|
|             | W              | H   | D       | W                | H      | D   | W            | H   |            |            |     |                |                 |
| EH-716-36   | 36"            | 56" | 33-1/4" | 36"              | 1-1/4" | 30" | 26"          | 29" | 567        | 354        | .25 | BL-700-36      | 190             |
| EH-716-48   | 48"            | 56" | 33-1/4" | 48"              | 1-1/4" | 30" | 38"          | 29" | 833        | 521        | .33 | BL-700-48      | 560             |
| EH-716-60   | 60"            | 56" | 33-1/4" | 60"              | 1-1/4" | 30" | 50"          | 29" | 1100       | 688        | .34 | BL-700-60      | 675             |
| EH-716-72   | 72"            | 56" | 33-1/4" | 72"              | 1-1/4" | 30" | 62"          | 29" | 1367       | 854        | .34 | BL-700-72      | 790             |
| EH-716-96   | 96"            | 56" | 33-1/4" | 96"              | 1-1/4" | 30" | 86"          | 29" | 1900       | 1188       | .40 | BL-700-96      | 1025            |

# The Eliminator 700 Series

This hard-working hood also features a built-in trough to capture runoff in washdown procedures where perchloric acid is in use. In addition, there is a manual washdown feature for the areas behind the baffles as well as the duct-collar areas. The interior is fabricated of type 316 stainless steel, integrally welded to a 316 stainless steel work surface, then buffed and polished to a #4 finish. The top is 1-1/4" with a 1/4" dish to retain spills. The airfoil and sash are also made of 316 stainless steel.

The EH-700 is built tough to withstand the daily use of perchloric acid, while keeping the workplace safe.

## ELIMINATOR 700 - PERCHLORIC ACID HOOD



## Accessories

| ITEM                   | AMS PT# | PAGE # | ITEM                     | AMS PT#     | PAGE # |
|------------------------|---------|--------|--------------------------|-------------|--------|
| Ceiling Enclosures     | CE      | 33     | Pre-Wiring               | PREW        |        |
| Plumbing Accessories   |         | 34     | Sash Stops               | SASHSTOP    | 38     |
| Electrical Accessories |         | 35     | Chain and Sprocket Drive | CHNSPK      | CALL   |
| Alarms                 | ALARM   | 32     | Push Button Sash         | PUSH BUTTON | 38     |
| Base Cabinets          | BC      | 36     | Combination Sash         | H&V         | 38     |
| Blowers                | BL      | CALL   | Lattice Assembly         | LATTICE     | CALL   |
| Pre-Plumbing           | PREP    |        | Auto Sash Return         | AUTO RETURN | 38     |