

The Eliminator 600 Series

The Eliminator 600 Radio Isotope Hood is specifically engineered and built to handle applications involving radiochemicals. It has the same aerodynamic design as the standard airfoil hood, with the added feature of a one-piece stainless steel liner and countertop with radius construction to prevent absorption of radioactive and corrosive chemicals.

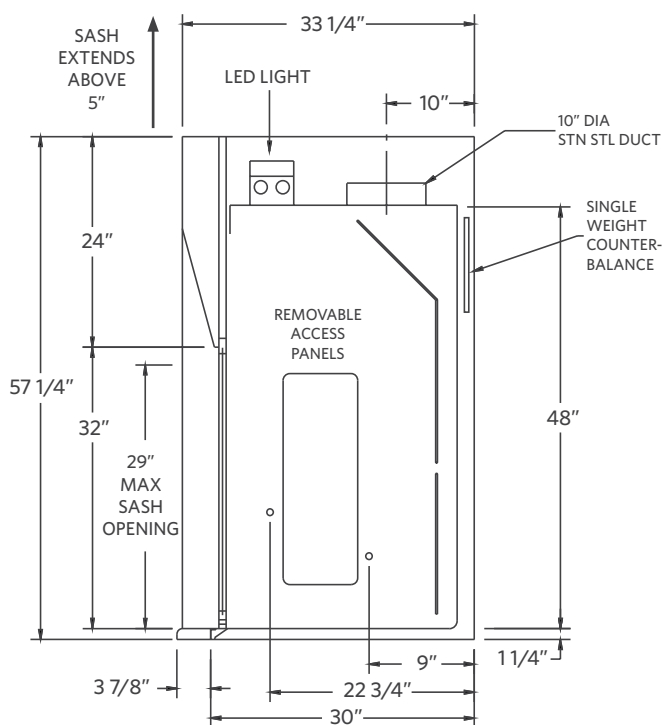
ELIMINATOR 600 - RADIO ISOTOPE HOOD

Radio Isotope Hood - For Safe Handling of Radiochemicals.



**U.L. 1805
Classified**

- Powder coat finish
- Full frame construction
- Shaft drive sash
- LED light with bulbs
- Flush-mount airfoil
- Interior access to light
- Full-length finger lift
- Louvered front for by-pass
- 304 stainless steel one-piece integral work surface and liner.
- Stainless steel sash
- Stainless steel airfoil

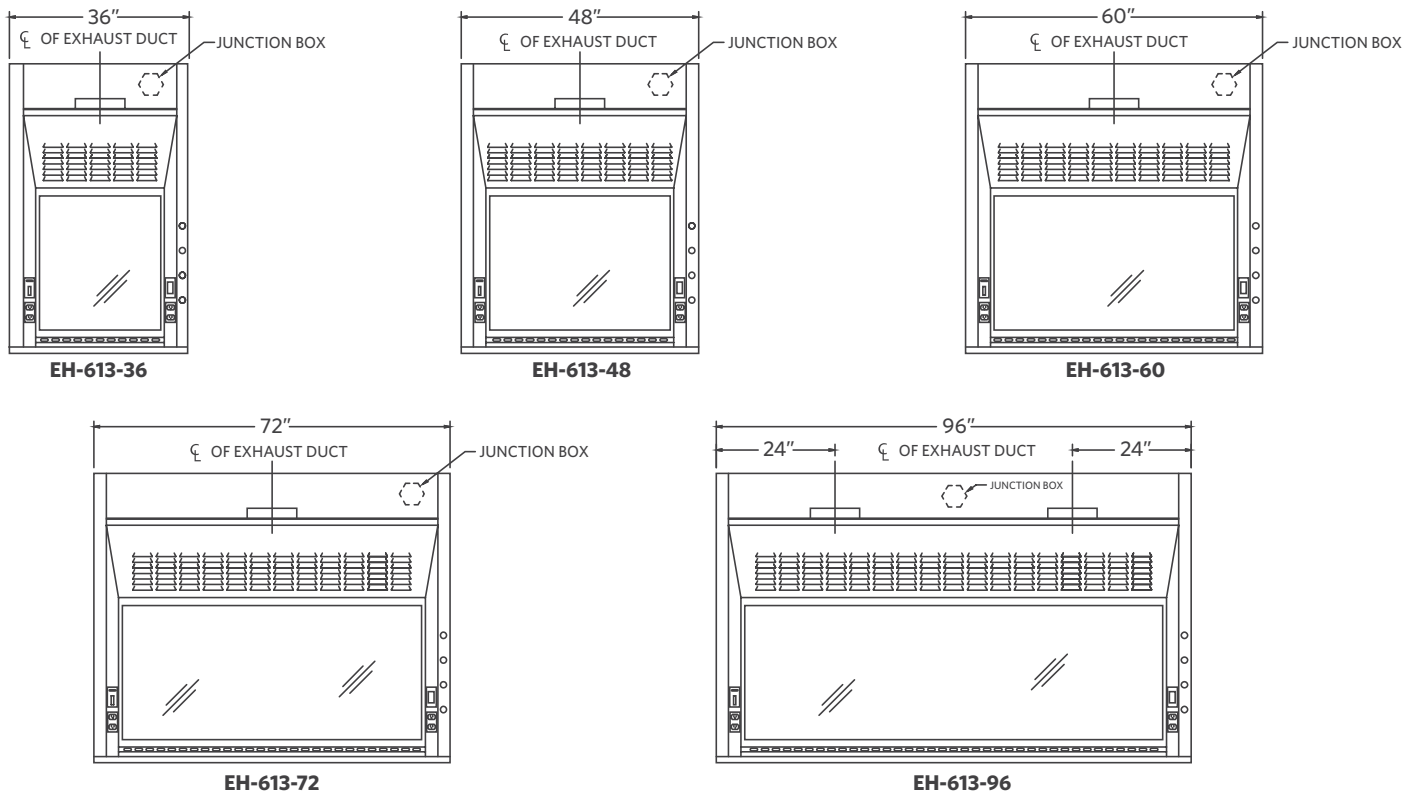


| Part Number | Superstructure | | | Integral Worktop | | | Hood Opening | | CFM @ 29"* | CFM @ 18"* | SP | Blower Model # | Shipping Weight |
|-------------|----------------|-----|---------|------------------|--------|-----|--------------|-----|------------|------------|-----|----------------|-----------------|
| | W | H | D | W | H | D | W | H | | | | | |
| EH-613-36 | 36" | 56" | 33-1/4" | 36" | 1-1/4" | 30" | 26" | 29" | 567 | 354 | .25 | BL-600-36 | 190 |
| EH-613-48 | 48" | 56" | 33-1/4" | 48" | 1-1/4" | 30" | 38" | 29" | 833 | 521 | .25 | BL-600-48 | 560 |
| EH-613-60 | 60" | 56" | 33-1/4" | 60" | 1-1/4" | 30" | 50" | 29" | 1100 | 688 | .34 | BL-600-60 | 675 |
| EH-613-72 | 72" | 56" | 33-1/4" | 72" | 1-1/4" | 30" | 62" | 29" | 1367 | 854 | .34 | BL-600-72 | 790 |
| EH-613-96 | 96" | 56" | 33-1/4" | 96" | 1-1/4" | 30" | 86" | 29" | 1900 | 1188 | .40 | BL-600-96 | 1025 |

The Eliminator 600 Series

The interior of the hood and integral countertop are fabricated of 304 stainless steel, buffed and polished to a smooth #4 finish. This reduces the chance of chemical buildup and simplifies decontamination. The flush-mount radiused airfoil is also type 304 stainless steel, as is the standard vertical rising sash. A combination sash is available as an option. Five available sizes and many optional accessories meet all your design needs and the end user's application requirements.

ELIMINATOR 600 - RADIO ISOTOPE HOOD



Accessories

| ITEM | AMS PT# | PAGE # | ITEM | AMS PT# | PAGE # |
|------------------------|---------|--------|--------------------------|-------------|--------|
| Ceiling Enclosures | CE | 33 | Pre-Wiring | PREW | |
| Plumbing Accessories | | 34 | Sash Stops | SASHSTOP | 38 |
| Electrical Accessories | | 35 | Chain and Sprocket Drive | CHNSPK | CALL |
| Alarms | ALARM | 32 | Push Button Sash | PUSH BUTTON | 38 |
| Base Cabinets | BC | 36 | Combination Sash | H&V | 38 |
| Blowers | BL | CALL | Lattice Assembly | LATTICE | CALL |
| Pre-Plumbing | PREP | | Auto Sash Return | AUTO RETURN | 38 |